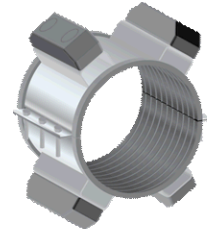




CCI PIPELINE SYSTEMS

Specifications & Certificates of Compliance: CCI Stainless Steel Band Casing Spacer Model CSS8

The CCI Model CSS8 shall be constructed of circular stainless steel bands, which bolt together forming a shell around the carrier pipe. The casing spacer shall be lined with a ribbed EPDM extrusion with a retaining section that overlaps the edges of the shell and prevents slippage. The spacer shall be designed with risers and runners to support the carrier pipe within the casing and maintain a minimum clearance of 1.0 in. between the casing ID and the carrier pipe OD.



The runners shall be Glass Filled Polymer with ends of the runners beveled to facilitate installation over rough weld beads or the weld ends of misaligned or deformed casing pipe. The runners shall be attached to support structures (risers) at appropriate positions to properly support the carrier pipe within the casing and to ease installation. They shall have a minimum length of 7.0 in. and a minimum width of 2.0 in.

The shell shall be manufactured of 8.0 in. wide, 14-gauge T-304 stainless steel. The riser shall be constructed of 10-gauge T-304 stainless steel, 6.75 in. minimum lengths with a height to be determined based on the annular space between the carrier pipe OD and the casing ID.

Recommended positioning of the spacers is one placed 1-2 feet on either side of the bell joint and one every 6-8 feet apart thereafter for a total of three casing spacers per joint. CCI engineering reserves the right to recommend spacing according to application.

PHYSICAL PROPERTIES

SHELL and RISERS

Shell – 14-Gauge T-304 Stainless Steel
Risers – 10-Gauge T-304 Stainless Steel

FINISH

2B Finish

RUNNERS

2" Wide Glass Filled Polymer
Length: 7" (177.8 mm) Minimum
Tensile Strength: ASTM D 638 27.0 kpsi
Compressive Strength: ASTM D 695 33.0 kpsi
Flexural Modulus: ASTM D 790 1,300 kpsi
Izod Impact @ 73°F (23°C): 11 kJ/m²
Melting Point: ASTM D 3418 504°F (263°C)

LINER – EPDM

Thickness: .090" (2.29mm) Minimum
Hardness: Durometer Shore 'A' 85-90
Dielectric Strength: {1/8" (3.18mm) thick} 60,000 VPM
Water Absorption: 1% Maximum
Overlaps edges

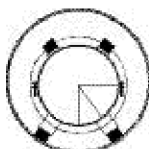
ASSEMBLY HARDWARE

Bolts: 5/16"-18UNC x 2" Long Stainless Steel
Nuts: 5/16" Stainless Steel Hex Nuts
Washers: 5/16" Stainless Steel SAE 2330

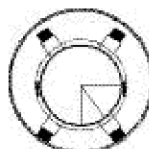
WELDING

All risers shall be welded to the shell by MIG welding.
All welds are to be fully passivated.

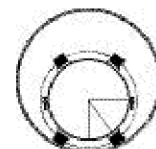
CCI Pipeline Systems certifies the Model CSS8 stainless steel casing spacers are of the highest quality which meet or exceed industry standards.



Centered



Centered Restrained



Clear Bell