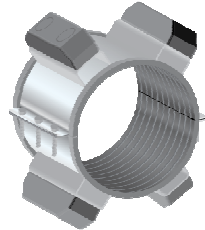




# CCI PIPELINE SYSTEMS

Specifications & Certificates of Compliance:  
CCI Stainless Steel Band Casing Spacer  
Model CSS8

The CCI Model CSS8 shall be constructed of circular Stainless Steel bands, which bolt together forming a shell around the carrier pipe. The casing spacer shall be lined with a ribbed PVC extrusion with a retaining section that overlaps the edges of the shell and prevents slippage. The spacer shall be designed with runners and/or risers to support the carrier pipe within the casing and maintain a minimum clearance of 1.0 in. between the casing ID and the carrier pipe OD.



The runners shall be Glass Reinforced Polymer with ends of the runners beveled to facilitate installation over rough weld beads or the weld ends of misaligned or deformed casing pipe. The runners shall be attached to support structures (shell or risers) at appropriate positions to properly support the carrier pipe within the casing and to ease installation. They shall have a minimum length of 7.0 in. and a minimum width of 2.0 in.

The shell shall be manufactured of 8.0 in. wide, 14-gauge Stainless Steel. The riser shall be constructed of 10-gauge Stainless Steel, 6.75 in. minimum lengths with a height to be determined based on the annular space between the carrier pipe OD and the casing ID.

Recommended positioning of the spacers is one placed 1-2 feet on either side of the bell joint and one every 6-8 feet apart thereafter for a total of three casing spacers per joint. CCI engineering reserves the right to recommend spacing according to application.

## PHYSICAL PROPERTIES

### SHELL and RISERS

Shell – 14-Gauge Stainless Steel  
Risers – 10-Gauge Stainless Steel

### FINISH

2B Finish

### RUNNERS

2" Wide Glass Reinforced Polymer  
Length: 7" (177.8 mm) Minimum  
Tensile Strength: ASTM D 638 27.0 kpsi  
Compressive Strength: ASTM D 695 33.0 kpsi  
Flexural Strength: ASTM D 790 40 kpsi  
Izod Impact @ 73°F (23°C): 11 kJ/m<sup>2</sup>  
Melting Point: ASTM D 3418 504°F (263°C)

### LINER – PVC (EPDM Alternate)

Thickness: .090" (2.29mm) Minimum  
Hardness: ASTM D2240 Durometer Shore 'A' = 80-90  
Dielectric Strength: ASTM D 149-13 1,000 VPM  
Water Absorption: 1% Maximum  
Overlaps edges

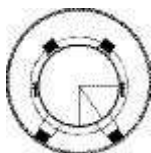
### ASSEMBLY HARDWARE

Bolts: 5/16"-18UNC x 2" Long Stainless Steel  
Nuts: 5/16" Stainless Steel Hex Nuts  
Washers: 5/16" Stainless Steel SAE 2330

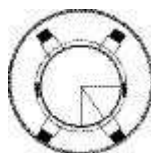
### WELDING

All risers shall be welded to the shell by MIG welding.  
All welds are to be fully passivated.

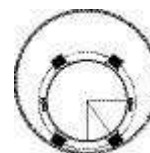
CCI Pipeline Systems certifies the Model CSS8 Stainless Steel casing spacers are of the highest quality which meet or exceed industry standards.



Centered



Centered Restrained



Clear Bell